



# The Journey of eLearning at Makerere University

---

By  
**Prof. Paul Birevu Muyinda**  
**Dr. Godfrey Mayende**

**Presented at 1<sup>st</sup> TELLS Conference 2022 on  
Future Education held in Kigali, Rwanda**

**6<sup>th</sup> July 2022**



**MAKERERE UNIVERSITY**

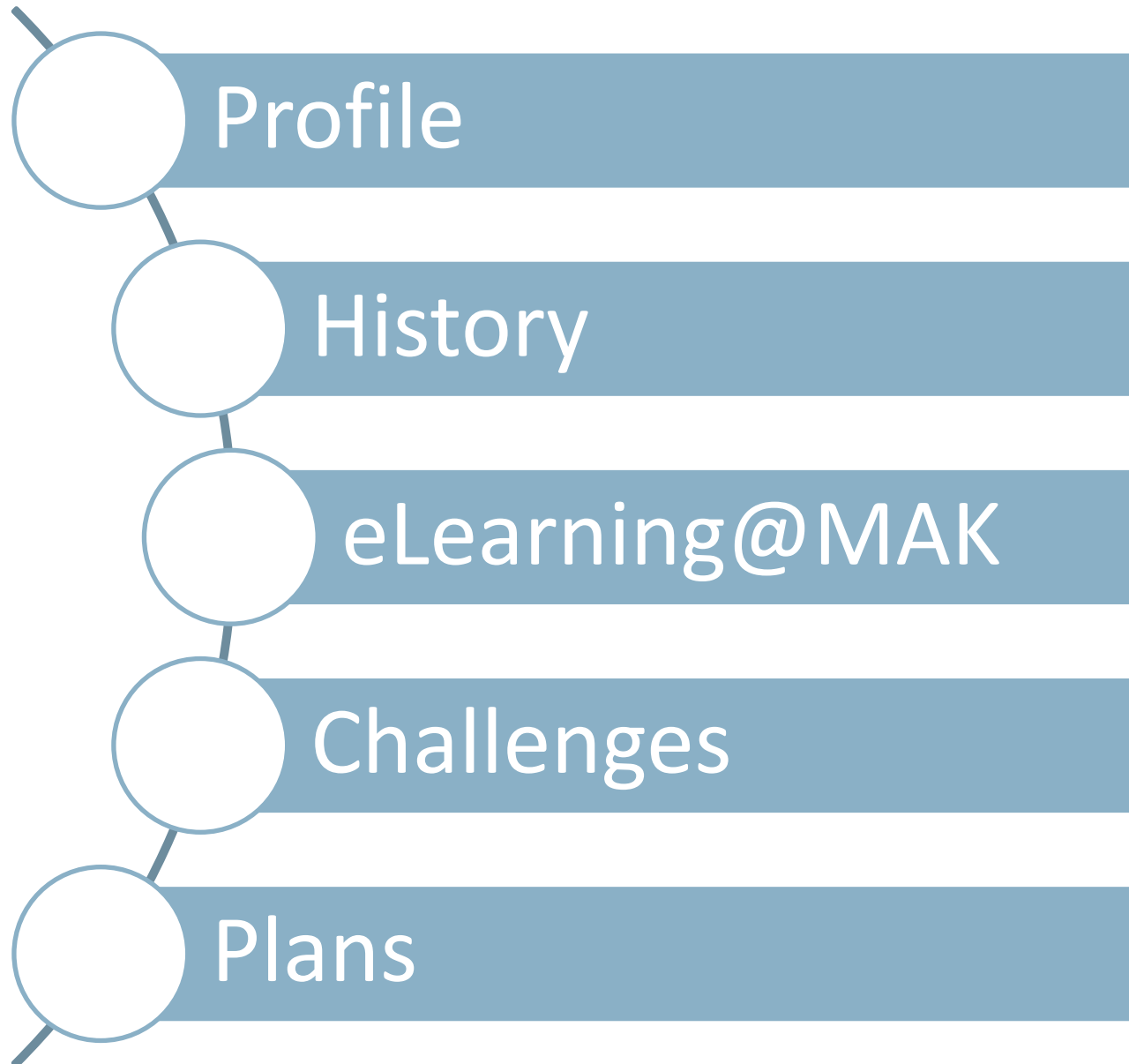
Leveraging 100 years of Excellence  
in Building a Transformed Society

## **Paul Birevu Muyinda**

- Associate Professor of Open Distance and eLearning
- Director Institute of Open Distance and eLearning
- Certified Blended Learning Expert
- PGC (Instructional Design and Performance Measurement) ASU, USA
- PGD (eTeaching I and II) UiA, Norway
- Online Facilitation, UCT, South Africa
- PGD (Educational Technology) UCT, South Africa
- PhD (mLearning) MAK, Uganda
- MSc (Computer Science) SU, China
- BSc (Statistics) MAK, Uganda

## **Godfrey Mayende**

- Lecturer and Instructional Designer of Open Distance and eLearning
- Certified Blended Learning Expert
- PGC (Instructional Design and Performance Measurement) ASU, USA
- PhD (Online Learning) UiA, Norway
- PGD (Educational Technology) UCT, South Africa
- MSc. Eng (Information System) NTNU, Norway
- BSc (Computer Science and Mathematics) MAK, Uganda



# MAK Profile



**MAKERERE UNIVERSITY**

Leveraging 100 years of Excellence  
in Building a Transformed Society

Profile

History

eL@MAK

Challenges

Plans

Student: 35,000

Academic staff: 1600

10 Colleges

## Makerere University Colleges



Profile

1. College of Agricultural & Environmental Sciences (CAES)



History

2. College of Business & Management Sciences (COBAMS)



eL@MAK

3. College of Computing & Information Sciences (COCIS)



Challenges

4. College of Education & External Studies (CEES)  
5. College of Engineering, Design, Art & Technology (CEDAT)



Plans

6. College of Health Sciences (CHS)  
7. College of Humanities & Social Sciences (CHUSS)  
8. College of Natural Sciences (CONAS)  
9. College of Veterinary Medicine, Animal Resources & Bio-security (COVABS)  
10. The School of Law (LAW)

1953 Center for Continuing Education

Department of Distance Education

**First Generation Distance Learning**

1991 – Bachelor of Commerce

Bachelor of Education

Bachelor of Science

Diploma in Youth and Development Work

Bachelor of Agriculture and Rural Innovation



- Profile
- History
- eL@MAK
- Challenges
- Plans

## Mode of Study

-  Profile
-  History
-  eL@MAK
-  Challenges
-  Plans

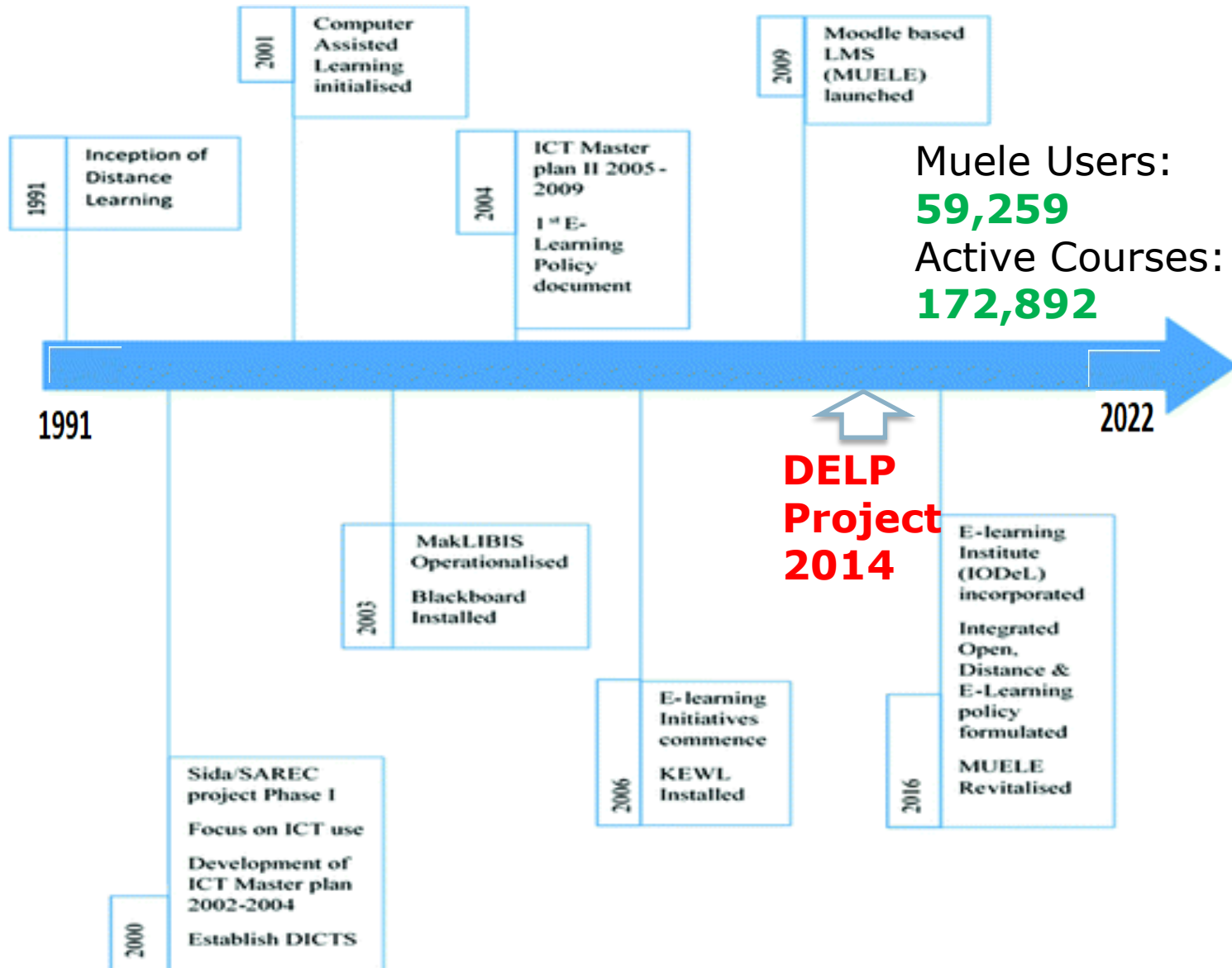
### Bachelor of Commerce

2 Weeks <b>Face-to-Face</b>	11 Weeks <b>Independent Study</b>	2 Weeks <b>Face-to-Face</b>	2 Weeks <b>Exams</b>
--------------------------------	--------------------------------------	--------------------------------	-------------------------

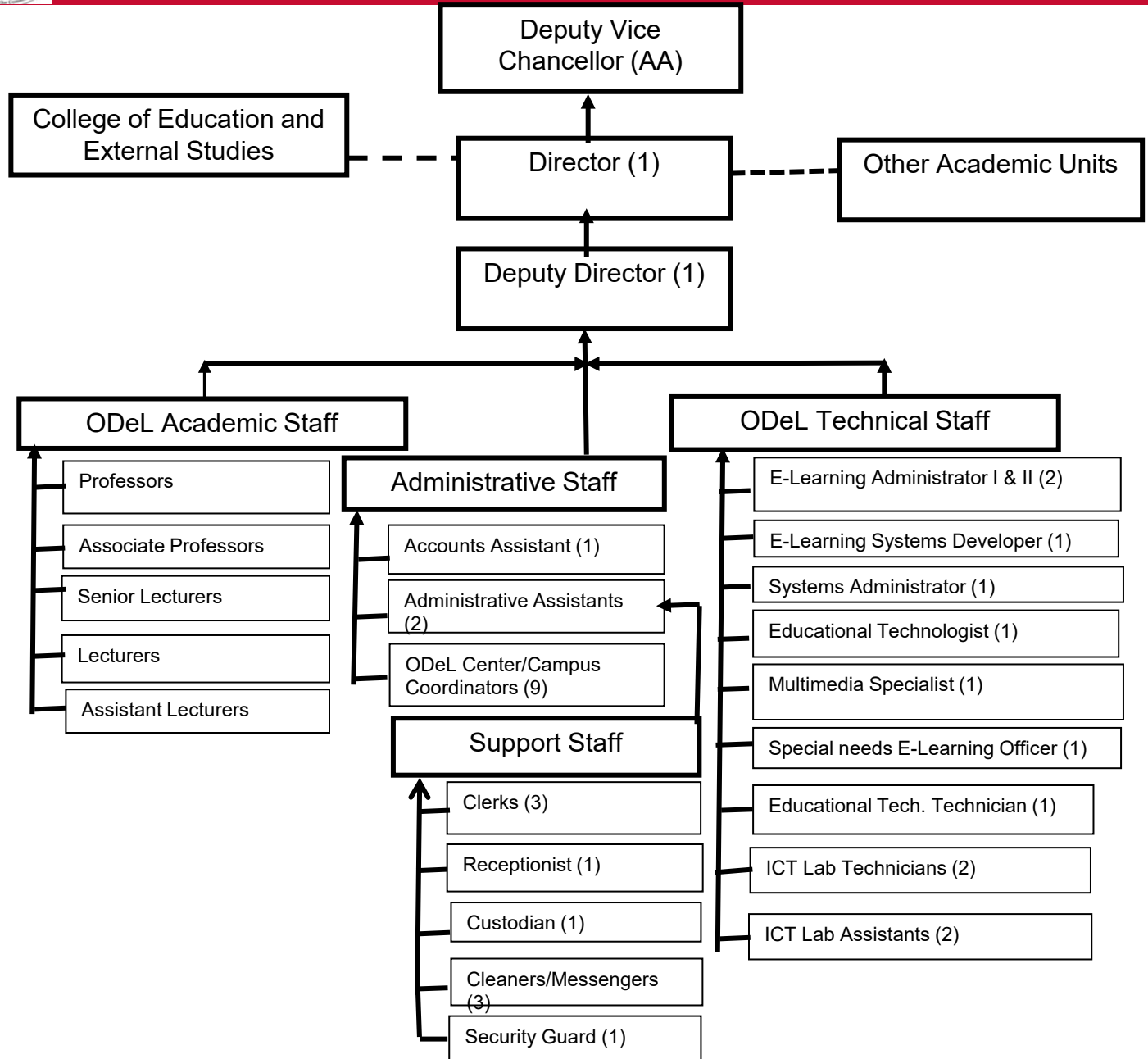
### Bachelor of Education, Bachelor of Science

2 Weeks <b>Face-to-Face</b>	12 Weeks <b>Independent Study</b>	1 Week <b>Face-to-Face</b>	2 Weeks <b>Exams</b>
--------------------------------	--------------------------------------	-------------------------------	-------------------------

- Profile
- History
- eL@MAK**
- Challenges
- Plans



# ODeL Coordination



Profile

History

eL@MAK

Challenges

Plans



College Coordinators in IODeL - 10



eLearning Coordinators/Champions  
based in Schools - 30



ICT Technicians based in Schools - 30



IODEL Internal Capacity Building

Training of Academic Staff in online Course Development (Onlinisation)

Training of Academic Staff in online Facilitation

Training of Academic Staff in Alternative Assessment Modalities

Sensitization Training of Students in eLearning

Demonstration of some steps

Demonstration of a Course on MUELE





Zero rated MUELE URL – MTN and Airtel



Access to affordable Laptops - Stanbic



Laptop Bank @ Colleges



Benchmarking & Internal Capacity Building

Training Faculty

Online Assessment Modalities

Assignment Tools & Quiz

Online Grading

Training Students

Online Assessment Modalities

Assignment access & submission

Quiz access and attempting



## Online Assessment Modalities



- ❖ Take-home papers and open-book exams.



- ❖ Multiple choice questions.
- ❖ Portfolio.



- ❖ Reflective Journals.
- ❖ Group/collaborative assignments.



- ❖ Wiki.
- ❖ Individual Peer Assessment of Contribution to group work.



- ❖ Video/audio recordings, podcasts.
- ❖ Blog.
- ❖ Claim.

## ICT Infrastructure

Inadequate Computer Labs

Lack Multimedia labs

Server Capacity is low

Unstable Connectivity

Attitude for some Staff & Students

The low number of staff with skills for developing engaging online courses

Proctored exams still not possible



5 PhDs under TELLS

10 Masters in Instructional Design and Technology Scholarships under TELLS

Server enhancement

Setup of Smart classroom and multimedia instruction recording studios

CPD for the Faculty in Content Development and Online Facilitation

Continued sensitization of students

Improving existing courses using UDL



# Q&A

**Murakoze**